

ICC **INDOFINE Chemical Company, Inc.**

121 Stryker Lane, Bldg. 30, Suite 1 • Hillsborough, NJ 08844 • U.S.A.

Phone: (908) 359-6778 • FAX: (908) 359-1179

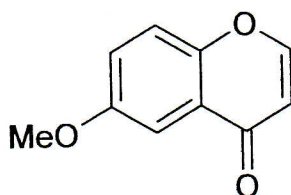
website: www.indofinechemical.com

e-mail: chemical@indofinechemical.com

CERTIFICATE OF ANALYSIS

CAT. No.: 19-533

<u>Product Name:</u>	6-METHOXY CHROMONE
<u>Lot Number:</u>	0210201
<u>Chemical Formula:</u>	C ₁₀ H ₈ O ₃
<u>Molecular Weight:</u>	176.17
<u>Melting Point:</u>	93-94.6°C
<u>Appearance:</u>	White powder
<u>Solubility:</u>	Soluble in Chloroform
<u>T.L.C.:</u>	Benzene: Ethyl acetate (9:1) Single spot
<u>Purity(HPLC):</u>	99+%





INDOFINE Chemical Company, Inc.

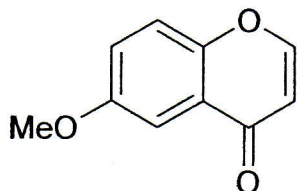
121 Stryker Lane, Bldg. 30, Suite 1 • Hillsborough, NJ 08844 • U.S.A.

Phone: (908) 359-6778 • FAX: (908) 359-1179

website: www.indofinechemical.com

e-mail: chemical@indofinechemical.com

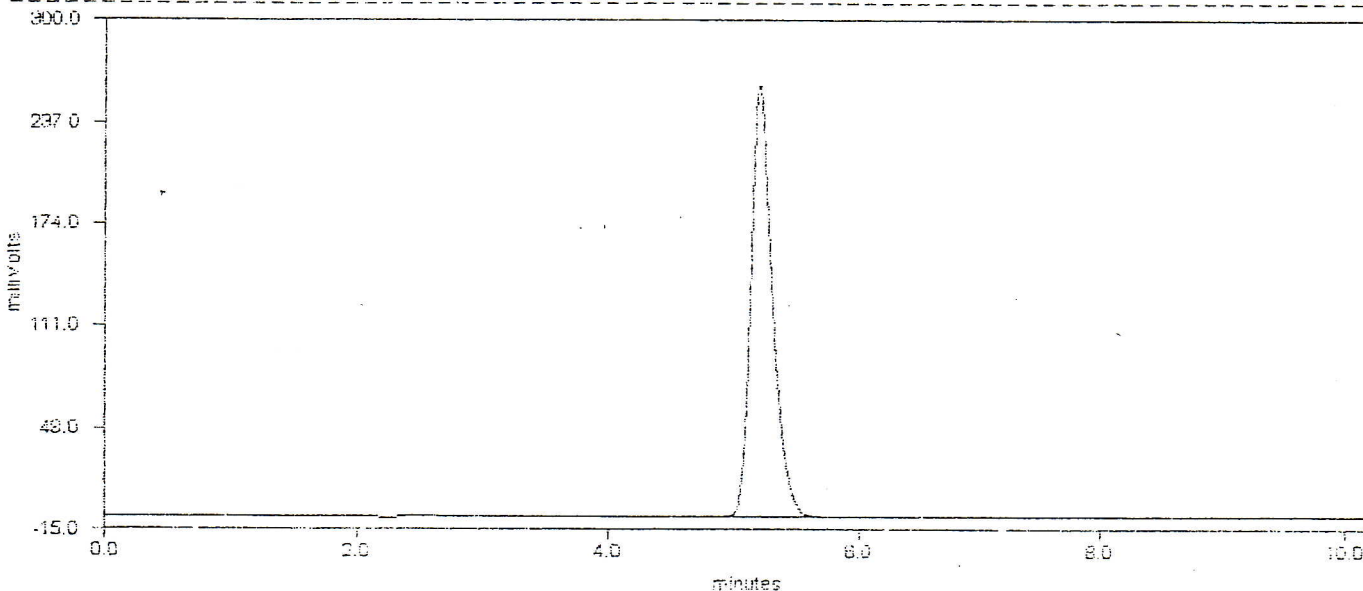
HPLC ANALYSIS



Catalog No.: 19-533
Product name: 6-Methoxychromone
Lot No.: 0210201

DELTA CHROMATOGRAPHY DATA SYSTEM

STRIPCHART PLOT FOR CHROMATOGRAM - c:\deltaw\data\np-801b.raw



DELTA CHROMATOGRAPHY DATA SYSTEM

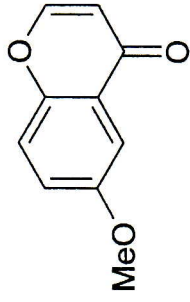
LISTING PEAK TABLE FOR CHROMATOGRAM - c:\deltaw\data\np-801b.raw.RAW

#	Type Name	Ret. Time	Area(μVSec)	Height(mV)	Area Percent
1	BE	5.20	3247747	267.4	99.6
2	MM	6.87	13572	0.3	0.4

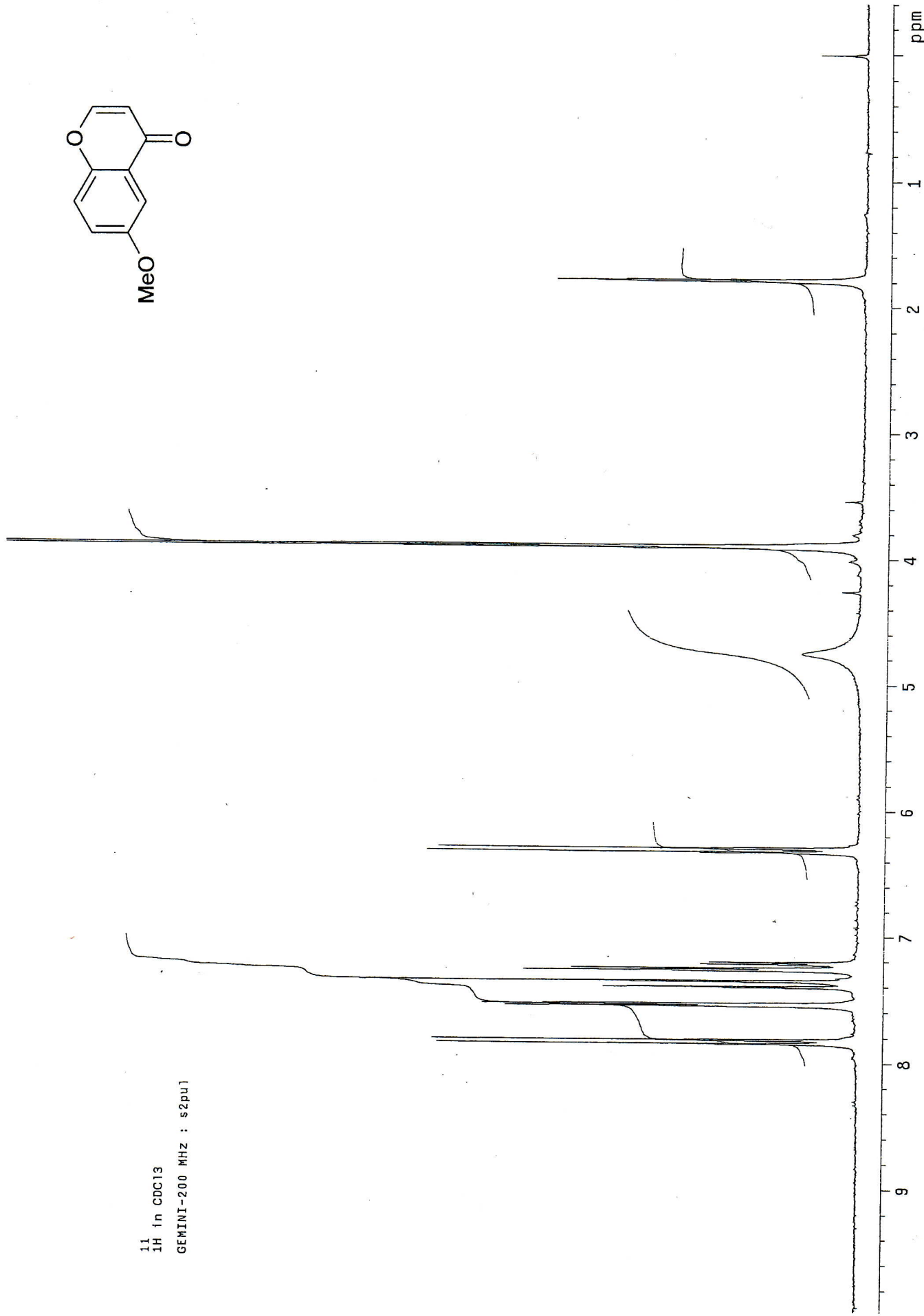


INDOFINE Chemical Company, Inc.
121 STRYKER LANE
BLDG. 30, SUITE 1
HILLSBOROUGH, NJ 08844

Catalog No.: 19-533
Product name: 6-Methoxychromone
Lot No.: 0210201



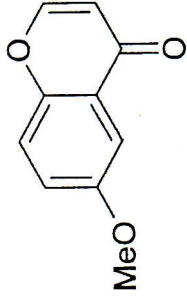
11
1H in CDCl3
GEMINI-200 MHz : s2pu1



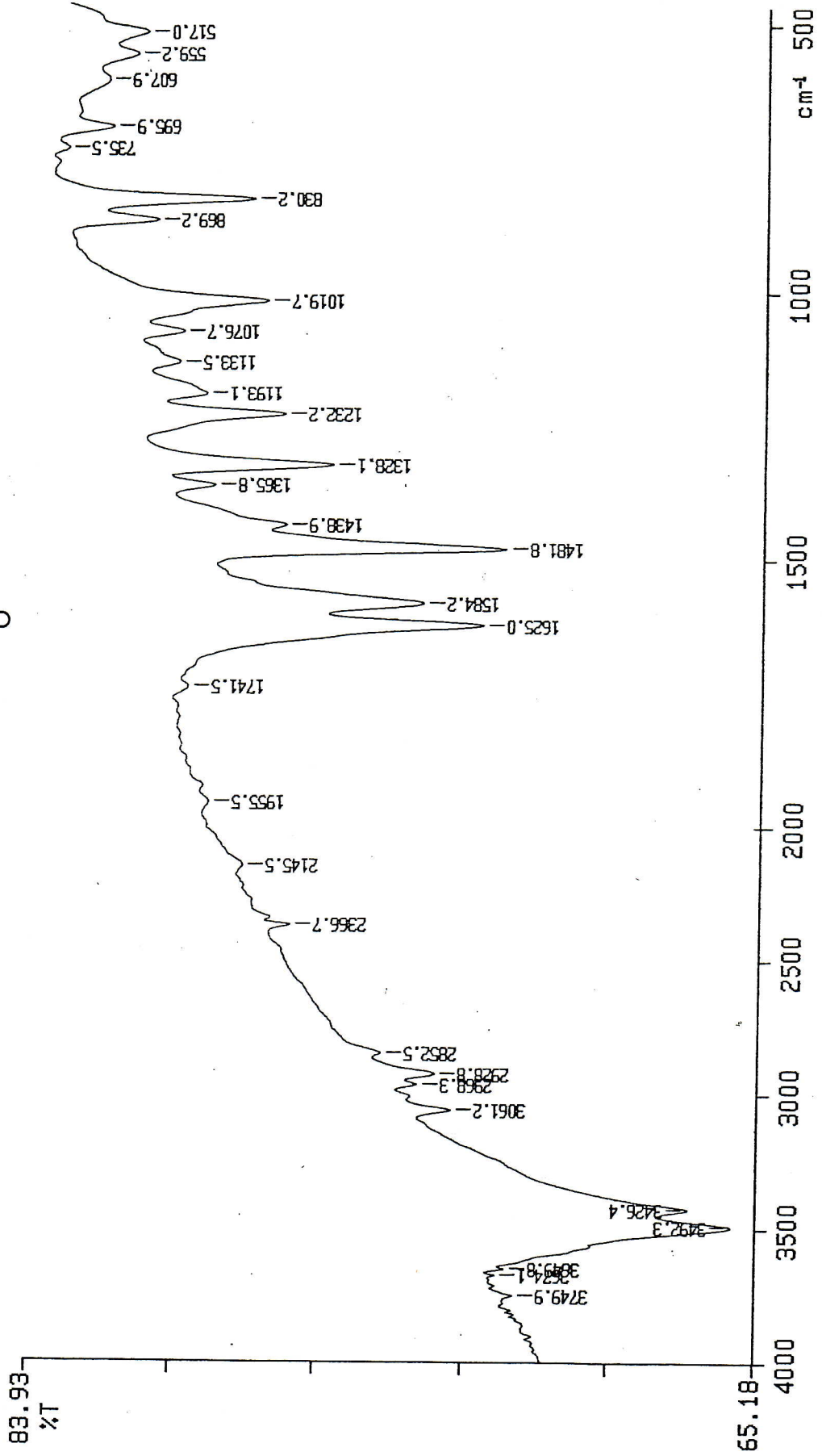


INDOFINE Chemical Company, Inc.
121 STRYKER LANE
BLDG. 30, SUITE 1
HILLSBOROUGH, NJ 08844

Catalog No.: 19-533
Product name: 6-Methoxychromone
Lot No.: 0210201



PERKIN ELMER



X: 1 scan, 16.0cm-1